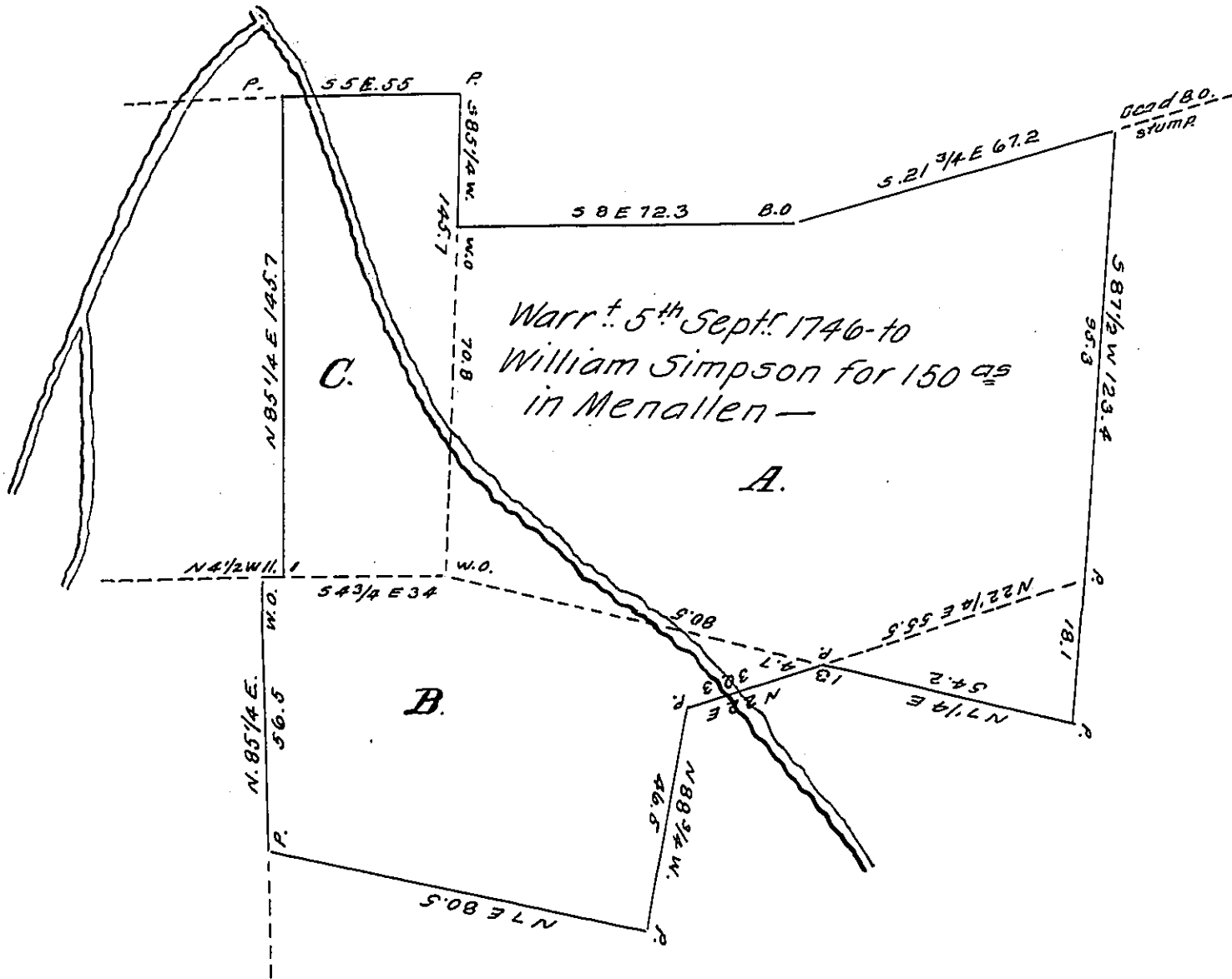


FORM NO 1.



The Part above marked *A.* is an Interference of 73^{acs 44 ps} & allce. Surveyed on Warrant to Thomas Cochran dated April 10th 1750 - and Part *B.* was surveyed to Thomas Cochran on Warrant dated April 18th 1745 - now owned by his heirs - The part *B.* Cont. 9.31^{acs 42 ps} & allce. The Part marked *C.* is an Interference of a larger Tract Surveyed on Warrant to Joseph Dixon dated Jan^y 13th 1737 - now owned by Henry Peter - All situate in Menallen Township - Witness my hand -

November 21st

1838.

Jn^o L. Gubernator. —

IN TESTIMONY that the above is a copy of the original remaining on file in the Department of Internal Affairs of Pennsylvania, made conformably to an Act of Assembly approved the 16th day of February, 1833, I have hereunto set my Hand and caused the Seal of said Department to be affixed at Harrisburg, this sixteenth day of December 1908.

Henry Houck
Secretary of Internal Affairs.